

**Regulation Concerning the Custom Code Method of Calculation for
Kanien'kehá:ka Lineage
K.R.L c. R-3, r-1**

**This Regulation was enacted pursuant to section 21.1 of the *Kahnawà:ke Residency Law* (the "Law")
and approved by the Mohawk Council of Kahnawà:ke on XXXX XX, 2020.**

1. PURPOSE

- 1.1 The purpose of this Regulation is to establish the rules and procedures to be followed by the Registrar in determining whether a great-grandparent was or is recognized as Ahsén:nen, Kanien'kehá:ka or Onkwehón:we, at minimum for the purpose of the Kahnawà:ke Residency Law.

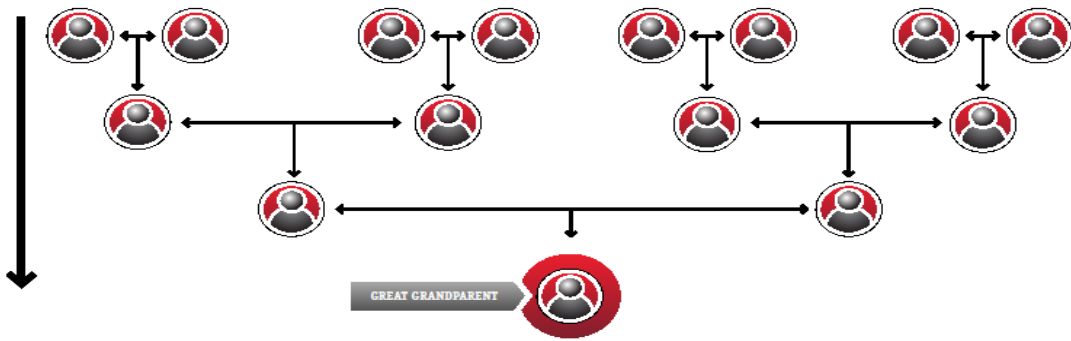
2. GUIDING PRINCIPLES

- 2.1 The Registrar in performing their duties and making their decisions with regards to a great-grandparent's lineage will use the chart reproduced below. After verifying the great-grandparent's lineage using the chart reproduced below the great-grandparent may be recognized as Ahsén:nen, Kanien'kehá:ka, Onkwehón:we, or Iah Onkwehón:we Té:ken.

3. CHART FOR DETERMINING GREAT-GRANDPARENT LINEAGE

- 3.1 The charts for determining Great-Grandparent lineage appear below and are not exhaustive.

CHART FOR DETERMINING GREAT-GRANDPARENT LINEAGE

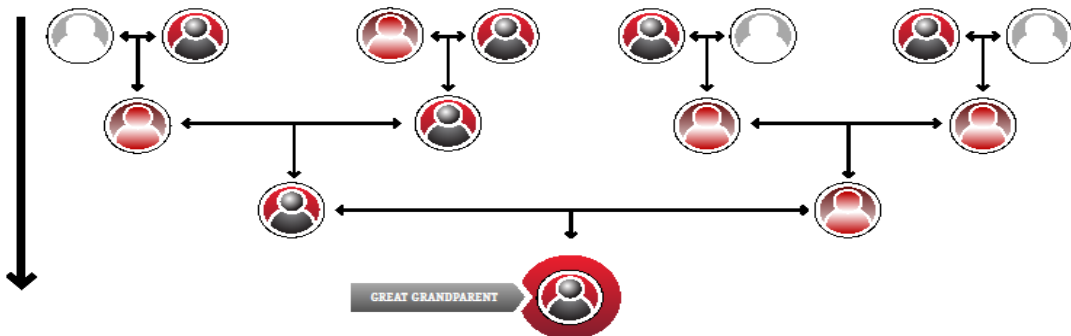


LEGEND

	ONKWEHÓN:WE / KANIEN'KEHÁ:KA
	AHSÉN:NEN
	IAH ONKWEHÓN:WE TÉ:KEN

PREPARED BY THE MCK MEMBERSHIP DEPARTMENT - MARCH 2019

CHART FOR DETERMINING GREAT-GRANDPARENT LINEAGE

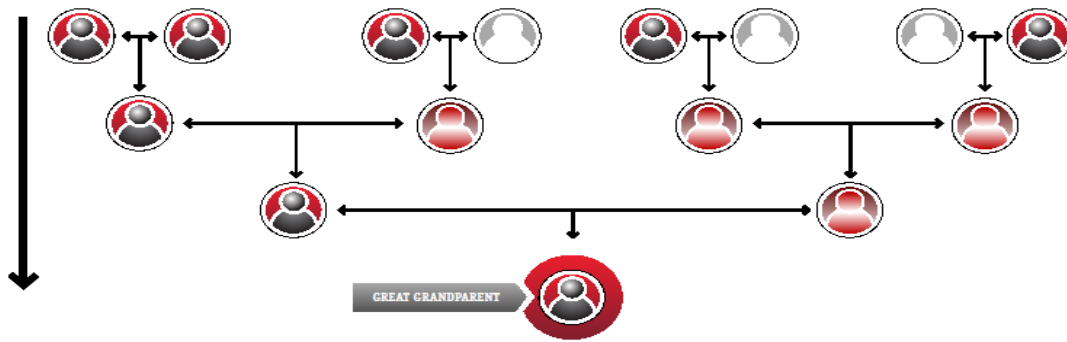


LEGEND

	ONKWEHÓN:WE / KANIEN'KEHÁ:KA
	AHSÉN:NEN
	IAH ONKWEHÓN:WE TÉ:KEN

PREPARED BY THE MCK MEMBERSHIP DEPARTMENT - MARCH 2019

CHART FOR DETERMINING GREAT-GRANDPARENT LINEAGE

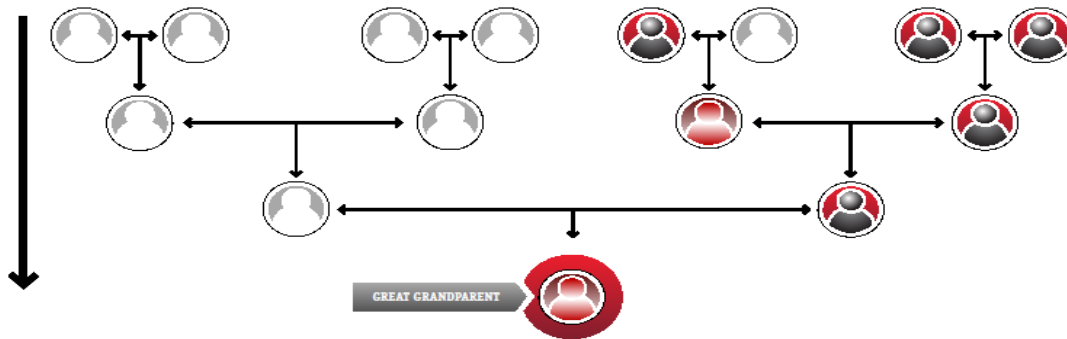


LEGEND

- ONKWEHÓN:WE / KANIEN'KEHÁ:KA
- AHSÉN:NEN
- IAH ONKWEHÓN:WE TÉ:KEN

PREPARED BY THE MCK MEMBERSHIP DEPARTMENT - MARCH 2019

CHART FOR DETERMINING GREAT-GRANDPARENT LINEAGE

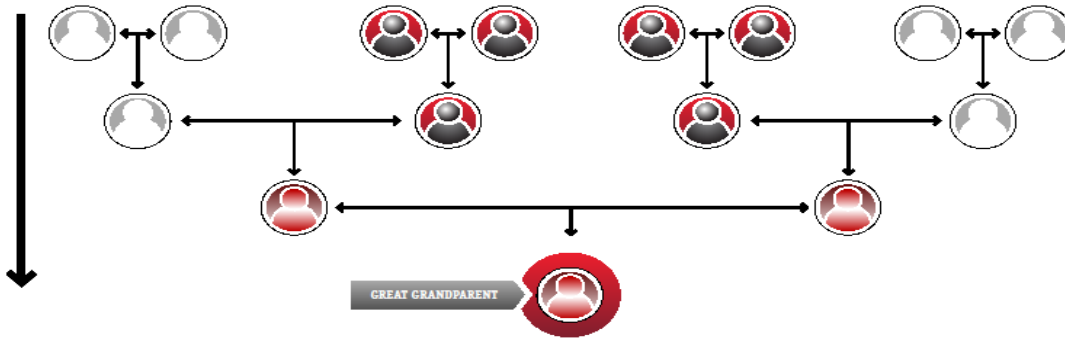


LEGEND




- ONKWEHÓN:WE / KANIEN'KEHÁ:KA
- AHSÉN:NEN
- IAH ONKWEHÓN:WE TÉ:KEN

PREPARED BY THE MCK MEMBERSHIP DEPARTMENT - MARCH 2019

CHART FOR DETERMINING GREAT-GRANDPARENT LINEAGE

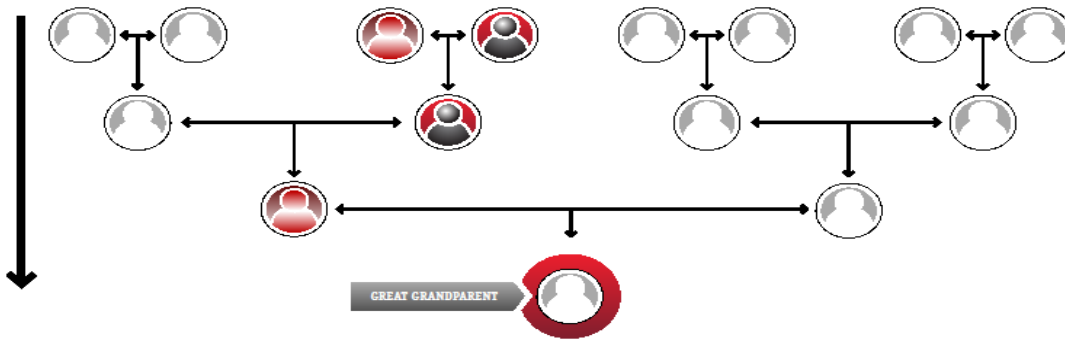


LEGEND




-  ONKWEHÓN:WE / KANIEN'KEHÁ:KA
-  AHSÉN:NEN
-  IAH ONKWEHÓN:WE TÉ:KEN

PREPARED BY THE MCK MEMBERSHIP DEPARTMENT - MARCH 2019

CHART FOR DETERMINING GREAT-GRANDPARENT LINEAGE



LEGEND

-  ONKWEHÓN:WE / KANIEN'KEHÁ:KA
-  AHSÉN:NEN
-  IAH ONKWEHÓN:WE TÉ:KEN

PREPARED BY THE MCK MEMBERSHIP DEPARTMENT - MARCH 2019